

Home > News > Headlines > Extension, Leiden

Headlines

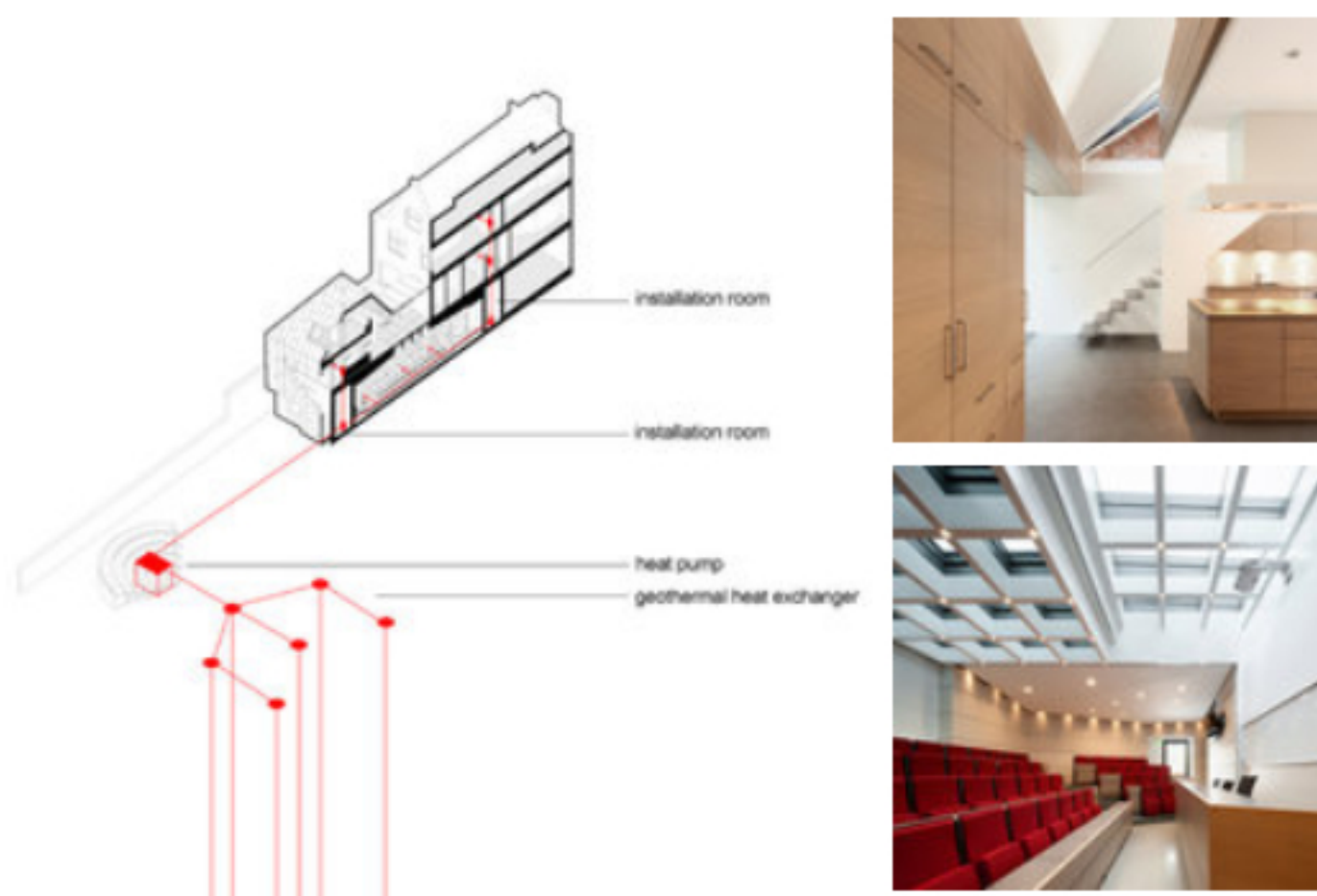


Progressive annex

NL - In the centre of Leiden, **Mirck Architecture** has extended a late-medieval canal house with a contemporary (partly rebuilt) annex. The International Tax Centre (ITC), a postdoctoral institute affiliated with Leiden University, is housed in a beautiful canal house at Rapenburg 65. Because of a growing number of students, the existing lecture hall had become too tight and no longer met technical requirements for climate regulation. When the heritage-listed neighbouring building at number 63 became available, the ITC commissioned architect Sander Mirck to research the (expansion) possibilities of the property in 2007. After a considerable delay caused by various municipal procedures, the project was finally completed in late 2012.



From a previously covered atrium between the two buildings, a new entry has been made into a comfortable and high-tech lecture hall with 74 seats. A conscious choice was made to position the lecturers' area not in the rear of the oblong hall, but rather along one side, so that the distance between speakers and listeners remains limited. The middle part of the room receives natural light through a glass, partially raised ceiling. Accessible via a glass door is a spacious inner garden. A new, natural stone auditorium also makes lectures outside possible, while simultaneously hiding the installation space for the heat pump. From the garden there is a good view of the annex.



The primary form of this annex is traditional, while the facade and roof coverings are contemporary, finished in black, perforated aluminium. A steel staircase outside, which runs beautifully along the historical masonry facade, leads to a bright kitchen on the first floor. This is used by the eleven students for whom luxury rooms with private bathrooms have been realized in the front house. Under the roof ridge directly above the kitchen, Mirck created a freely suspended seating area with connecting terrace. Through a glass atrium one finally arrives in the front building once more, where the students' rooms are spread over three storeys. Currently, the architects are still working on a special light wall, which will ensure that the contemporary intervention is not only visible from the backyard, but from inside the atrium as well.



Tuesday | 26 March | 2013 | Netherlands | Emiel Lamers (Photography: Katja Efting)

Meanwhile

Competition: Ideas for...

Kosovo Architecture Foundation (KAF) and the Municipality of Pristina are organizing the 'Ideas for Pristina' design...

Competition: Sokolniki...

Russia Sokolniki Park of Culture and Rest and the ArchPolis Centre for Territorial Initiatives, with support from the City...

AA Visiting School

UK The AA Visiting School will take place from 7 to 25 July 2014 at the Cultural Centre of European Space Technologies...

Competition: Space and...

France Every year, the Jacques Rougerie Foundation launches a competition to give rise to vocations and encourage...

Days of Architecture 2014

Bosnia and Herzegovina Days of Architecture 2014, one of the major architecture events in Sarajevo, will take place from 23 to 25 May 2014....

[→ More](#)

Share this article



Search

All subjects

All countries